

MASONRY FIREPLACE DOORS



MASONRY FIREPLACE DOORS

The fireplace is the heart of the room. Our custom built fireplace doors bring a new level of style to your fireplace that you and your family will enjoy for years.

Masonry fireplaces are built with brick or stone and usually have a chimney made of the same material. They can be a traditional rectangle opening or a full arched fireplace. No matter the shape or design, we offer the largest variety of masonry fireplace doors. From a sleek, minimal frame to doors created by a master blacksmith. You can create the perfect door that will complete your fireplace. All of our doors help keep heating & cooling costs down by preventing energy loss through the chimney.



Legend Arch

The Legend Arch offers true arched doors that are custom cut to precisely match the arch of your fireplace.

Hand Crafted Quality

All of our doors are made in the USA. Design details range from crisp and clean to rough and hammered by a master blacksmith. Milwaukee Forge detail is shown.



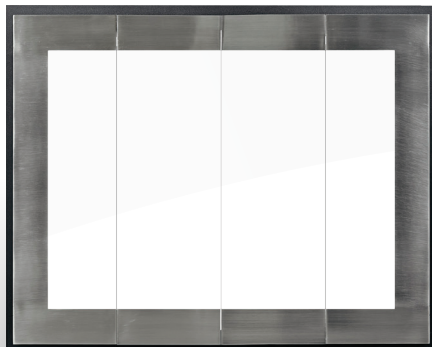


Carolina door featuring the sunrise window pane in copper fire.



Moderne - Slim Frame | *Simple, brilliant geometry*

This sleek and contemporary design is so unique - even its name is special. The Moderne Series is the first contemporary custom fireplace door line that offers three unique door models. The Slim Fit Frame features a 1 13/16" door frame providing a larger viewing area.



Moderne - Original | *Simple, brilliant geometry*

The Moderne Original features a 3" door frame that appears to "float" in front of the fireplace.



Odyssey | *Contemporary, modern look*

The Odyssey features "minimal" design with frameless glass doors. The Odyssey is part of our Moderne Series and features a hidden frame that appears to "float" in front of the fireplace.



Legend Elite | *Minimal, sleek framing*
The Legend Elite features a small 3/16" outer frame that virtually disappears once installed in your masonry fireplace. All you see are slim 1 1/4" door frames at the top and bottom. It provides the maximum viewing area with minimal frame.



Stiletto | *Simple, clean lines*
The slimmest fit to keep the focus on your fireplace. The Stiletto's simple, clean frame works with every style of fireplace design. Choose to have the frame overlap your fireplace or fit completely inside the opening. Or choose our popular "Cutback" option which creates an almost flush fitting frame for a sleek look.



Apex | *Sharp, angular shape*
The protruding angular 2" frame presents a contemporary aesthetic for your fireplace.



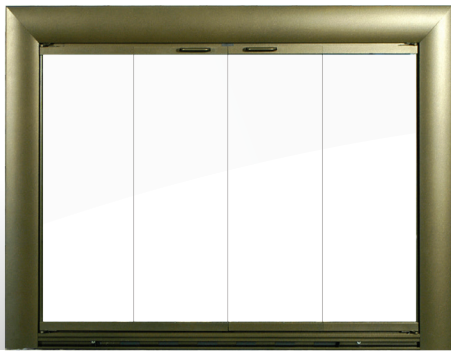
Elite | *Open, maximum viewing*
The Elite is the only "track & glass" masonry fireplace door available today. With just a slim frame at the top and bottom, the Elite is minimal and maximizes the beauty of your fireplace.



All Glass | *Lighter, contemporary look*
Our All Glass model offers a modern look with a lighter feel and presence.



Legend | *Unique, ultimate customization*
 The Legend offers the most finishes and customization of all of our doors. The Legend can be custom built to fit almost any fireplace opening, no matter what shape or size. The Legend is available in a basic model or with any standard or custom window panes as shown.



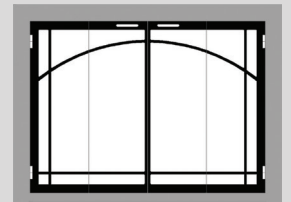
Bungalow | *Broad, smooth framework*
 The Bungalow features a slightly curved 3 1/2" frame that works with any style.



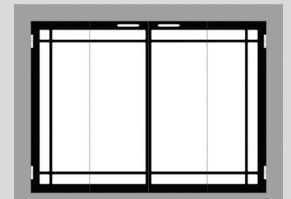
Savannah | *Transitional, versatile design*
 The Savannah frame features a flush, decorative channel that spans the spectrum of traditional to contemporary design.



Optional Door Designs



Sunrise Window Pane



Window Pane



Carolina | *Classic, time-honored design*

The Carolina is made from a single piece of laser cut steel and available in our most popular finishes and styles. Custom built to your masonry fireplace dimensions, the Carolina brings a new level of style and beauty to your fireplace.



Brookfield | *Sleek, timeless symmetry*

The outer frame emphasizes simple, classic proportion.

Phoenix | *Curved, decorative profile*

The Phoenix is our more decorative “mid-sized” aluminum frame. It’s curved extrusion creates a soft aesthetic.

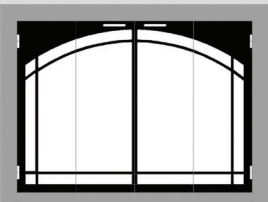


Silhouette | *Subtle, round frame*

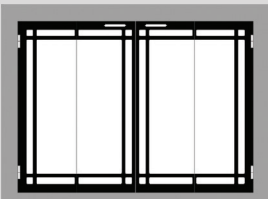
A subtle rounded frame draws a fine line of style around your fireplace.

Shadow | *Sleek, stepped detail*

The Shadow’s thin frame offers a perfect finishing outline around the edge of the fireplace, without distracting from the focal point.



Arch Window Pane



Mission Window Pane



Hudson | *Barnstyle door*

Inspired by the vintage barns of Hudson, WI, the Hudson brings a unique design and style to your fireplace. The glass doors open by gliding on a track. Custom built to your fireplace dimension, the Hudson is available in either twin door (shown) or single panel.

Arch Makeover Series

Arch makeover fireplace doors allow you to make your rectangular fireplace look like a classic arch.



Buckingham | *Traditional English Styling*

The keystone and window pane design transforms your rectangular fireplace into a classic looking arched opening.



Black Rock Arch Makeover | *Vintage, alluring composition*

The wide top frame of the Black Rock offers enough surface area for a variety of decorative layering.



Milwaukee Forge | *Bold, Traditional Style*

The Milwaukee Forge collection is created by a master blacksmith. Using a coal fired forge, he bends, hammers and shapes steel by hand to create a fireplace door that honors the history of the craft.



Blacksmith | *Rugged, regal texture*

A masterwork from the metal crafter's hand. A hammered finish over the entire frame recalls the ancient blacksmith's art.



Napa Valley | *Ornate, Vineyard aesthetic*

Grapes and leaves bring the look of California's wine country to your fireplace.



Madrid | *Strong, renaissance design*

The Madrid features hammered edges created by hand. The arch banding and riveting add to the rich detail bringing the look of classic Spanish design to your fireplace. Complete the look by adding a matching Madrid Tool Set.



Black Rock | *Strong, industrial inspiration*

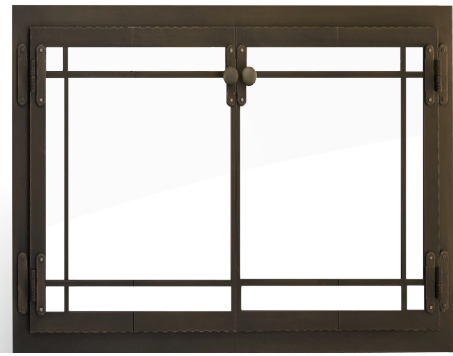
A perfect combination of strength & beauty. The Black Rock features a 2" frame and unique layered and rivet detail and exclusive handles which brings a rugged beauty to your fireplace. Complete the look with a matching Black Rock tool set (shown at right).



Black Rock tool set and log basket.



Hammered Edge | *Ornate, textured detailing*
 Our Hammered Edge doors showcase decorative hinges with matching handle plates. The frame and door panels feature hand hammered edges created on a century old anvil.



Craftsman | *Refined, artisan steel*
 No matter your style, this unique handcrafted door will compliment your living space. The Craftsman features a window pane design with decorative hinges and hammered edges.



Banded Scroll | *Ornate, exquisite scrollwork*
 Layered bands around lavish scrollwork provide depth to your fireplace front. The Banded Scroll's elaborate design is perfect in a classic and elegant room.



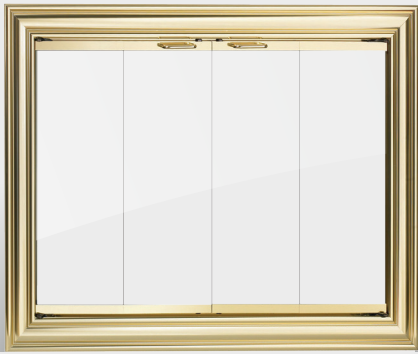
Legend Arch | *Detailed, precision-cut curvature*
 The Legend Arch offers true arched doors with the most finishes and customization of all of our doors. This model will enhance and elevate your living space, no matter what the design aesthetic.



Oak Tree | *Traditional, outdoor inspiration*
 Custom tree design highlighted with three dimensional leaf detail. Handles incorporate a twig design with acorn accents.



Tuscany | *Classic, ornate pattern*
 The arched viewing area created by this Tuscan design is elegant and cozy. The aesthetics fit perfectly in a room with popular ivy or filigree patterns.



Bedford | *Charming, Old World tradition*

The Bedford's traditional profile brings Old World charm to the fireplace.



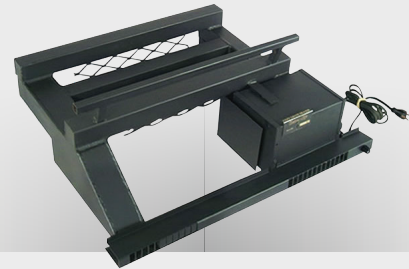
Multi-Sided | *Corner and peninsula solutions*

Stunning from any angle, our patented all-glass multi-sided enclosures eliminate vertical frames for a seamless appearance.



Outdoor Collection | *Durable, stainless steel*

Our stainless steel door brings beauty and safety to the outdoor living space. This door can weather the elements under a pergola or uncovered in the open air.



Cozy Grate | *Efficient, effective heating*

Designed for masonry fireplaces, the Cozy Grate Fireplace Heater is the perfect companion for most fireplace glass doors. It can help turn your fireplace into an effective and efficient heater.



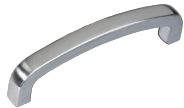
Complete, Hearth Solutions | *Tool Sets & Log Baskets*

Our Carolina and Premier Design hearth accessories match our most popular fireplace doors in finish and design.

Handle Options



Simplicity



Contemporary



Rugged Steel



Birdcage



Infinity



Square

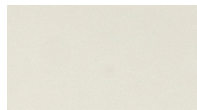


Classic

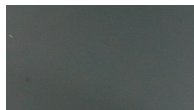


Knobs

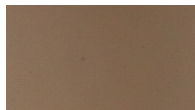
Glass Color Options



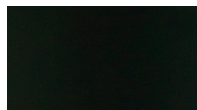
Clear



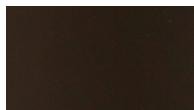
Grey



Bronze



Black



Solar Cool Bronze

Optional Handles and Hinges for Hammered Edge and Blacksmith Doors



8" Twist



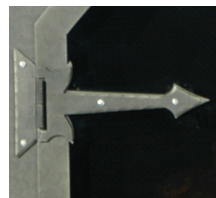
Wildfire



Knobs



Blacksmith



Arrow



Acorn



Fleur de Lis



Strap

Mesh Options

- Mesh Curtain
- Twin Gate Mesh
- Single Panel Gate Mesh

Door Configurations

- Twin (Cabinet)
- Tracked Bi Fold (Aluminum Only)
- Fold Back Bi Fold
- Gate Mesh No Glass (Twin Only)

Finish Options

Doors are available in a wide variety of standard and premium finishes. Please visit www.glassfireplacedoors.com or your Design Specialties dealer for a complete palette of colors and finishes for your door.



Design Specialties, LLC • 11100 W Heather Avenue • Milwaukee, WI 53224
www.glassfireplacedoors.com