



WOOD BURNING INSERTS



NEO SERIES

FIREPLACE INSERTS



NEO 1.6 INSERT

NEO 2.5 INSERT

Designed to deliver efficient combustion and controlled heat, Pacific Energy wood inserts are easy to light, easy to use, and provide a clear view of the flame. With variable speed fans, clean-glass airwash technology and heavy-gauge overbuilt construction, the our inserts will provide many years of comfort and enjoyment.

 EBT2 EXTENDED BURN
TECHNOLOGY



small to medium rooms

 EBT2 EXTENDED BURN
TECHNOLOGY



medium to large rooms

TRADITIONAL

FIREPLACE INSERTS



VISTA INSERT

SUPER INSERT

SUMMIT INSERT

 **EBT2 EXTENDED BURN**
TECHNOLOGY



small to medium rooms



medium rooms



medium to large rooms

CAST-IRON SERIES

FIREPLACE INSERTS



ALDERLEA T5 INSERT

ALDERLEA T5 CLASSIC INSERT

 CAST IRON **OVER STEEL**

 CAST IRON **OVER STEEL**

Transform your fireplace into an efficient heating system and enjoy the traditional cast iron styling of the T5 Inserts. Choose from rich metallic black or the added beauty and charm of lustrous porcelain enamel to create a striking centerpiece that provides long-lasting, clean-burning heat.



medium rooms



medium rooms



FEATURED TECHNOLOGIES

BAFFLE SYSTEM

Pacific Energy is a recognized industry leader in "clean burn" technology, as exemplified in our unique high capacity baffle system for preheating secondary combustion air for re-burning. By burning the combustible elements in the air, we improve our stoves' environmental performance while significantly reducing the amount of wood that is consumed.

EBT2 EXTENDED BURN TECHNOLOGY

Our second-generation Extended Burn Technology, or EBT2, precisely regulates secondary airflow based on vacuum created by the chimney for a longer, cleaner, more economical burn. This automatically adjusts the secondary combustion system, for a cleaner, more efficient burn and extended burn time.

CAST IRON OVER STEEL

The Alderlea design makes the most of each metal: the steel stove and floating firebox is free to expand and contract, and its design maximizes convective heat efficiency, while the cast iron wrapping provides radiant heat. This superior system greatly extends longevity over an all cast stove. Metal fatigue is no longer a factor, allowing us to offer the industry's first lifetime warranty on a cast stove.

FLOATING FIREBOX

Our floating firebox system is legendary in the industry. Solidly designed with 304 grade stainless steel brick-support rails, it allows key parts to freely expand and contract, which reduces metal fatigue and adds years of life to the entire fireplace insert.

KNIFE EDGE DOOR

A formed and welded knife edge opening creates a superior air tight seal to the door gasket while strengthening the stove face. This is a more labor intensive design but our experience has proven this is the best way to manufacture a fireplace.



FOR MORE INFORMATION VISIT
pacificenergy.net

NEO 1.6 INSERT

70,000 BTU CORD WOOD
40,000 BTU EPA TEST FUEL

EFFICIENCY (LHV)	81.5%
EMISSIONS	3.9 GM/HR.
LOG SIZE (MAX)	18 IN.

FIRBOX SIZE	1.6 CU.FT.
GLASS SIZE	131 SQ.IN.
WEIGHT	284 LBS.

STANDARD FEATURES

Reliable, durable non-catalytic technology
Air wash system for super clean ceramic glass
High-tech multi-port combustion air injection system

Inside and outside combustion air capable
Floating firebox for extended stove life
Rich Metallic Black finish
304 Stainless Steel baffle, insulation cover, rails and flame shield

Boost air for easy lighting
Extended Burn Technology (EBT2)
Two 45 cfm temperature actuated variable speed blower/s
Single-Lever Air Control
Removable Cast-Iron Flue Collar
First mid size PE firebox with East West Orientation
Integrated Heat Exchanger

NEO 2.5 INSERT

85,000 BTU CORD WOOD
45,000 BTU EPA TEST FUEL

EFFICIENCY (LHV)	81%
EMISSIONS	TBD
LOG SIZE (MAX)	18 IN.

FIRBOX SIZE	2.5 CU.FT.
GLASS SIZE	146 SQ.IN.
WEIGHT	TBD

DESIGN OPTIONS

Contemporary Surround in Metallic Black or Stainless Steel
Oversize Surround



Contemporary Metallic Black



Contemporary Stainless Steel

ALDERLEA T5 INSERT

72,000 BTU CORD WOOD
34,600 BTU EPA TEST FUEL

EFFICIENCY (LHV)	81.6%
EMISSIONS	3.4 GM/HR.
LOG SIZE (MAX)	18 IN.

FIRBOX SIZE	2.7 CU.FT.
GLASS SIZE	138 SQ.IN.
WEIGHT	342 LBS.

STANDARD FEATURES

Reliable, durable non-catalytic technology
Floating firebox for extended stove life
Airwash Technology for clear, clean glass
Safe, easy straight-in loading
Easy one-touch control
Inside and outside combustion air capable
Temperature-actuated variable-speed blowers
Metallic black cast iron finish (T5 Insert)

DESIGN OPTIONS

T5 Classic Insert: Majolica, Ebony or Ivory porcelain enamel finish
Surround top: standard or oversize
Standard Surround Top (42 1/2"W x 30 3/8" H)
Oversized Surround Top (42 1/2"W x 34 1/8" H)



Ebony



Majolica



Ivory

VISTA INSERT

56,000 BTU CORD WOOD
26,300 BTU EPA TEST FUEL

EFFICIENCY (LHV)	80.7%
EMISSIONS	2.9 GM/HR.
LOG SIZE (MAX)	16-18 IN.

FIRBOX SIZE	1.4 C.FT.
GLASS SIZE	92 SQ.IN.
WEIGHT	255 LBS.

STANDARD FEATURES

Reliable, durable non-catalytic technology
Easy one-touch operation
Airwash Technology for clear, clean glass
Floating firebox for extended stove life
Plate-steel top
Steel baffle and 304 stainless steel insulation cover
Boost air for easy lighting
Temperature-Actuated Variable-Speed Blower

DESIGN OPTIONS

Arched door: choice of four finishes
Surround: embossed (standard size) or flat (oversized)

SUPER INSERT

72,000 BTU CORD WOOD
34,600 BTU EPA TEST FUEL

EFFICIENCY (LHV)	81.6%
EMISSIONS	3.4 GM/HR.
LOG SIZE (MAX)	18 IN.

FIRBOX SIZE	2.2 CU.FT.
GLASS SIZE	115 SQ.IN.
WEIGHT	342 LBS.

STANDARD FEATURES

Reliable, durable non-catalytic technology
User friendly, one-touch operation
Air wash system for super clean ceramic glass
High-tech multi-port combustion air injection system
Inside and outside combustion air capable
Floating firebox for extended stove life
Rich Metallic Black finish
Steel baffle and 304 Stainless Steel insulation cover
160cfm Temperature Actuated variable speed blowers
Boost air for easy lighting
Cast iron warming shelf and ash lip

DESIGN OPTIONS

Arched or Radiant door in four finishes
Standard surrounds

SUMMIT INSERT

99,000 BTU CORD WOOD
38,500 BTU EPA TEST FUEL

EFFICIENCY (LHV)	80.4%
EMISSIONS	3.9 GM/HR.
LOG SIZE (MAX)	18-20 IN.

FIRBOX SIZE	3.0 CU.FT.
GLASS SIZE	140 SQ.IN.
WEIGHT	465 LBS.

STANDARD FEATURES

Reliable, durable non-catalytic technology
Easy one-touch operation
Airwash Technology for clear, clean glass
Multi-port combustion air injection system
Inside and outside combustion air capable
Floating firebox for extended stove life
Safe, easy front-to-back fuel loading
Metallic black finish
Cast iron warming shelf & ash lip
304 Stainless Steel baffle, insulation cover, rails and flame shield
Boost air for easy lighting
Temperature-actuated variable-speed blowers
Extended Burn Technology (EBT2)

DESIGN OPTIONS

Arched door: choice of four finishes
Surround: embossed (standard size) or flat (oversize)



Pacific Energy Traditional Inserts are customizable in your choice of door finishes.
Radiant Door Design available for Super Insert only.

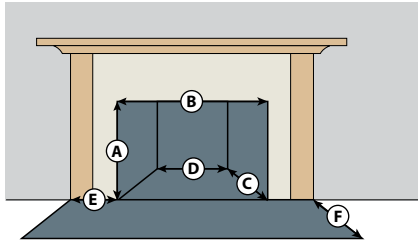


Available in Gold, Nickel, Metallic Black and Brushed Nickel.

SURROUND SIZES

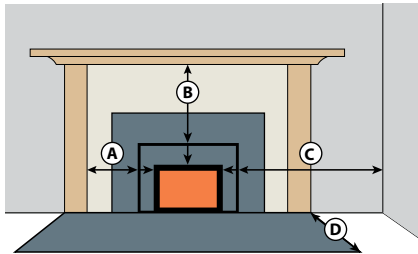
	STANDARD		OVERSIZE		FLAT OVERSIZE	
	Width	Height	Width	Height	Width	Height
NEO 1.6 INSERT	36"	26"	46"	30"	n/a	n/a
NEO 2.5 INSERT	40"	28"	48"	32"	n/a	n/a
VISTA INSERT	36 1/2"	26"	42"	30"	42"	30"
SUPER INSERT	43"	29"	48"	33"	48"	33"
SUMMIT INSERT	50"	32"	54"	34"	54"	34"
ALDERLEA T5 INSERT	42 1/2"	30 3/8"	42 1/2"	34 1/8"	n/a	n/a

MINIMUM FIREPLACE OPENING



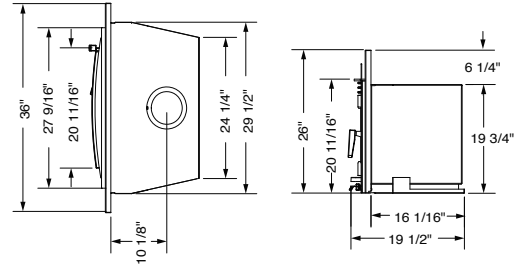
	A	B	C	D	E	F
NEO 1.6 INSERT	19 3/4"	30"	16"	25"	8"	16"
NEO 2.5 INSERT	20"	31 1/2"	20 1/4"	26 1/2"	8"	16"
VISTA INSERT	20b	23 1/2"	15	23 1/2"	8"	16"
SUPER INSERT	21"	24"	18 1/2"	24"	8"	16"
SUMMIT INSERT	23 1/8"	28"	18"	26"	8"	16"
ALDERLEA T5 INSERT	21"	24 1/2"	18 1/4"	24"	8"	16"

CLEARANCES TO COMBUSTIBLES

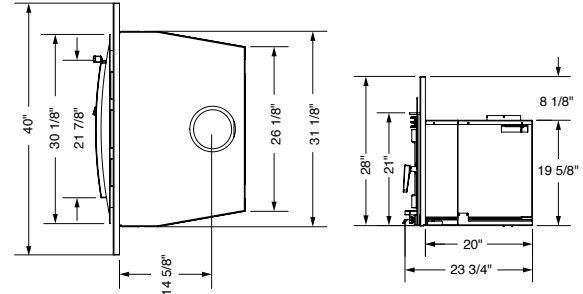


	A	B	C	D (Can)	D (USA)
NEO 1.6 INSERT (distance from door's edge to combustibles)	9 3/4"	16"	13 1/2"	18"	16"
NEO 2.5 INSERT (distance from door's edge to combustibles)	n/a	n/a	n/a	18"	16"
VISTA INSERT	9"	15"	9"	18"	16"
SUPER INSERT	6 1/2"	15"	10"	18"	16"
SUMMIT INSERT	8"	15"	8"	18"	16"
ALDERLEA T5 INSERT	6.5"	16"	20 1/2"	18"	16"

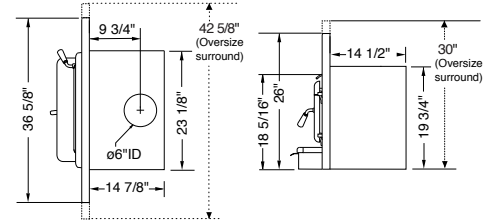
NEO 1.6



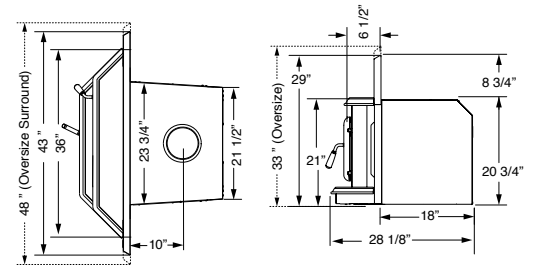
NEO 2.5



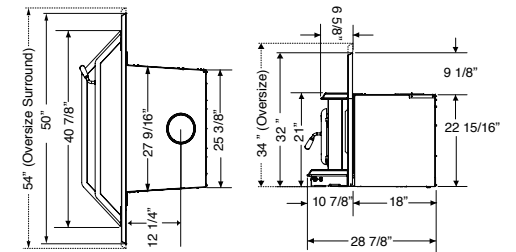
VISTA



SUPER



SUMMIT



ALDERLEA T5

