



— **PACIFIC** —

FP30

WOODBURNING FIREPLACE



FLOATING FIREBOX

Pacific Energy's unique floating firebox components allow for unrestricted thermal expansion and contraction, reducing metal fatigue and ultimately resulting in a quieter operation.

AIR WASH SYSTEM

What good is a beautiful wood fire if you can't see it? Pacific Energy's unrivalled Air Wash System keeps your fireplace glass clean and clear even at low burn settings.

QUADRANT

The Pacific FP30's user friendly one-touch air adjustment allows for simple operation to optimize heat output and efficient burn times.

INTRODUCING THE PACIFIC FP30

The perfect blend of Pacific Energy's legendary wood heat performance with the functionality of a built-in fireplace and contemporary design.



CONVECTION AIR

Efficiently heat spaces up to 3000 sq. feet

6" CHIMNEY

BAFFLE

Fully seam welded, the 304 grade stainless steel integrated baffle system uses 10 times more stainless than tube technology, allowing for cleaner, longer burns and a secondary burn combustion system that turns smoke to energy.

EBT2

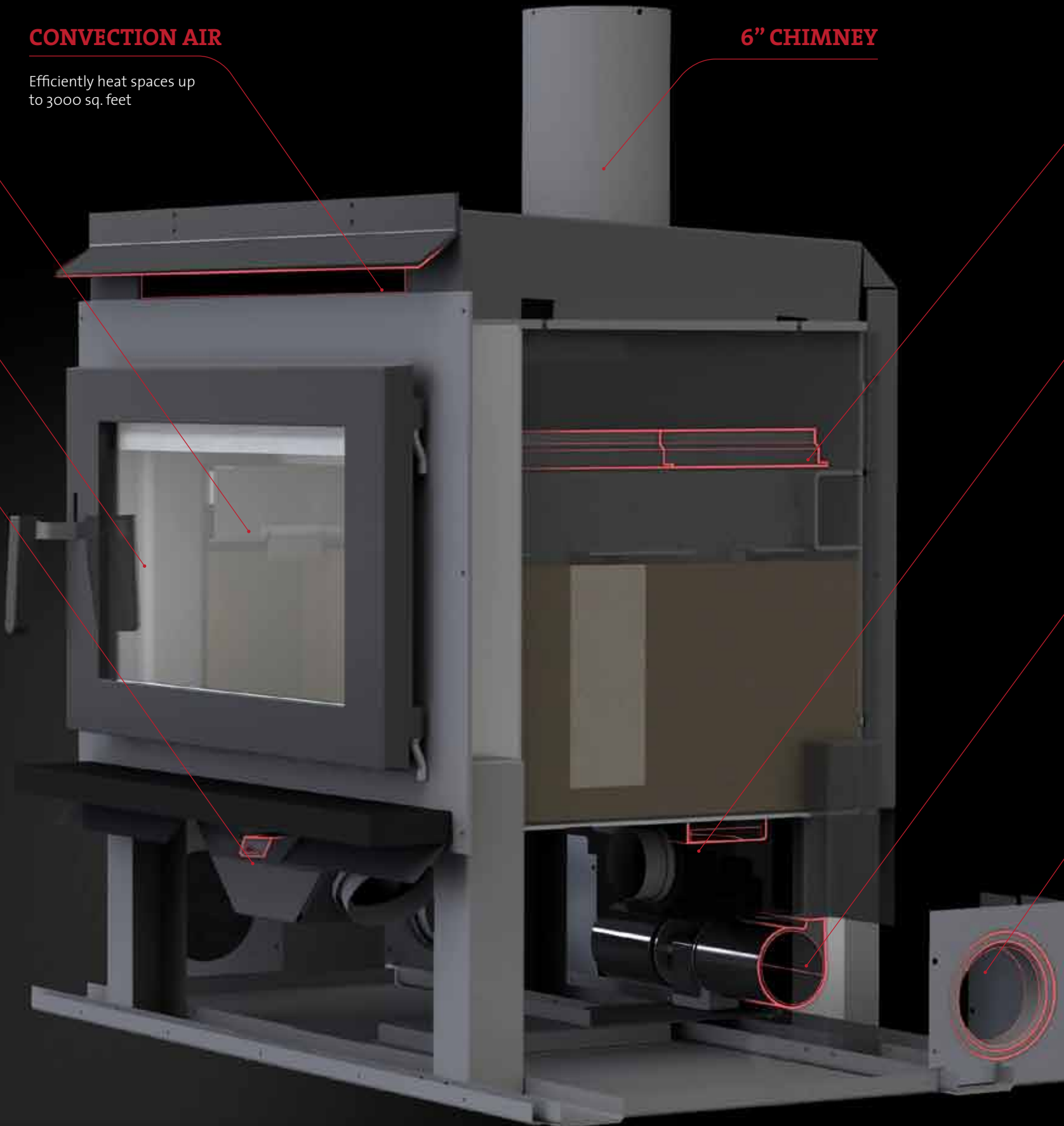
Pacific Energy's second generation Extended Burn Technology is a first in wood heat engineering. The automated adjusting airflow control system creates a stable, consistent combustion chamber airflow resulting in temperatures that will burn fuel longer and substantially lower your heating costs.

FAN

With a dual outlet, the 125 CFM convection fan quietly and effectively moves air through the unit to the convection air terminal.

AIR INTAKE DUCT

Located on either side of the unit for maximum installation options, the multi position air intake duct is easily adjustable to suit most applications.



PACIFIC ENERGY

pacificenergy.net

PACIFIC FP30

WOODBURNING FIREPLACE

STANDARD FEATURES

- Reliable non-catalytic technology
- Extended burn technology
- User friendly one-touch operation
- Air wash system for super clean ceramic glass
- High-tech multi port combustion air injection system
- Inside and outside combustion air capable
- Floating firebox for extended life
- Easy and safe front to back fuel loading
- Cast iron door and ash lip
- 304 Stainless Steel Baffle, insulation cover, rails, and flame shield
- Boost air for easy lighting
- 125 cfm temperature actuated variable speed blower

OPTIONS

Heat Transfer Kit to run heat ducts to various other rooms creating a warm, cozy atmosphere throughout your home

Backed by the best in the industry - Pacific Energy's Limited Lifetime Warranty

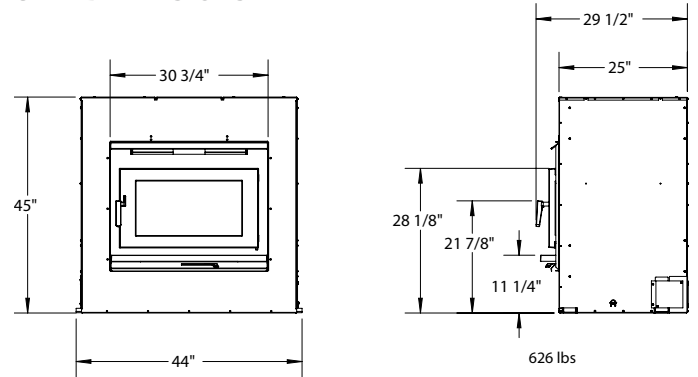
Heat Output Cord Wood

99,000 BTU

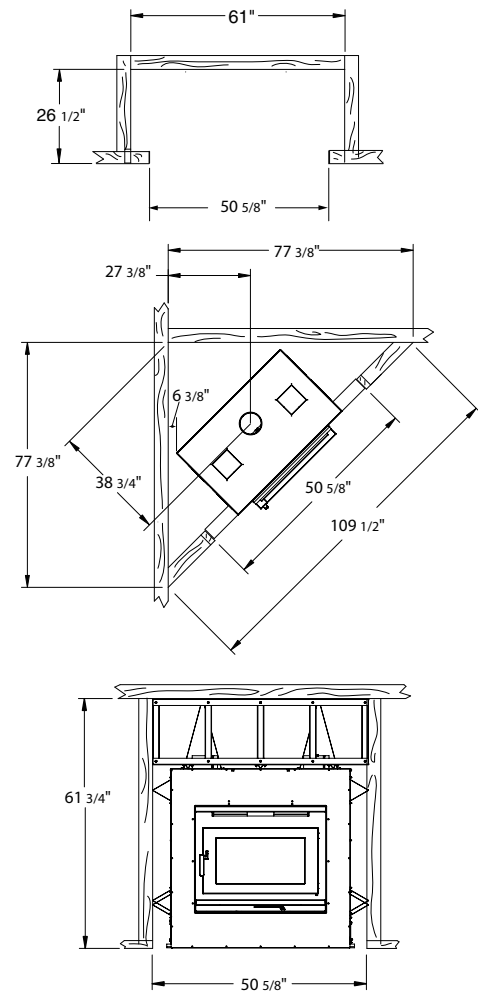
38,500 BTU EPA Test Fuel

Efficiency (LHV)	74%
Emissions	2.68 gm/hr.
Log Size (max)	18-20 inches
Firebox Size	3.0 Cubic Ft.

UNIT DIMENSIONS



MINIMUM FRAMING DIMENSIONS*



*For Reference only. Installation instructions must be consulted before framing. Specifications subject to change without notice.

**PACIFIC
ENERGY**
pacificenergy.net