

VISTA SERIES

WOOD BURNING STOVES
FOR HEATING SMALL TO MEDIUM SPACES



VISTA
VISTA CLASSIC

VISTA

FREESTANDING STOVE

FOR SMALL – MEDIUM SPACES



DESIGN-A-FIRE
A SYSTEM BY PACIFIC ENERGY



Pacific Energy Vista Series Wood Stoves are customizable in your choice of door and leg finishes. Available in Gold, Nickel, Metallic Black and Brushed Nickel.



Heat Output Cord Wood **56,000 BTU**

26,300 BTU EPA Test Fuel

EFFICIENCY (LHV)	80.7%
EMISSIONS	2.9 GM/HR.
LOG SIZE (MAX)	16–18 INCHES
FIREBOX SIZE	1.5 CU.FT.
GLASS VIEWING AREA	92 SQ.IN.
WEIGHT	APPROX. 275 LB.

Despite its compact size, this is a high-performance woodstove, engineered for powerful heat output, high efficiency and ease of use. Combine the features and performance with the ageless beauty of porcelain finish and your choice of door, leg and trivet finish, and you have the Vista Classic. Traditional elegance with state-of-the-art woodburning performance

FEATURES

- Reliable, durable Non-Catalytic Technology
- Multi-port Combustion Air Injection System
- easy one-touch operation
- Airwash Technology for clear, clean glass
- Inside and outside combustion air capable
- Heavy plate steel top
- Boost air for easy lighting
- Mobile Home approved

VISTA CLASSIC

FREESTANDING STOVE
FOR SMALL – MEDIUM SPACES



DESIGN OPTIONS

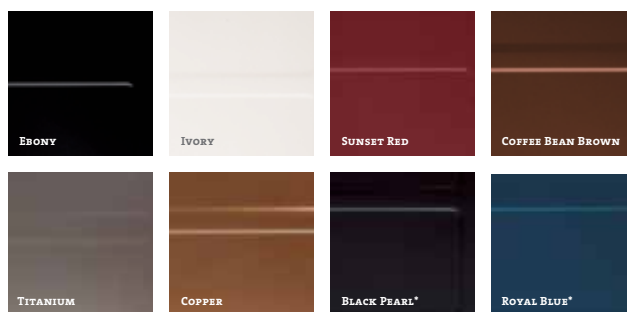
VISTA
Legs: choice of four finishes
Pedestal base
Arched door: choice of three finishes
VISTA CLASSIC
Porcelain enamel: choice of eight colors
Decorative trivet: choice of three finishes

PERFORMANCE OPTIONS

Temperature-Actuated Variable-Speed Blower
Screen Door
Easy-to-use ash disposal system (optional on Vista;
included with Vista Classic)

PORCELAIN OPTIONS

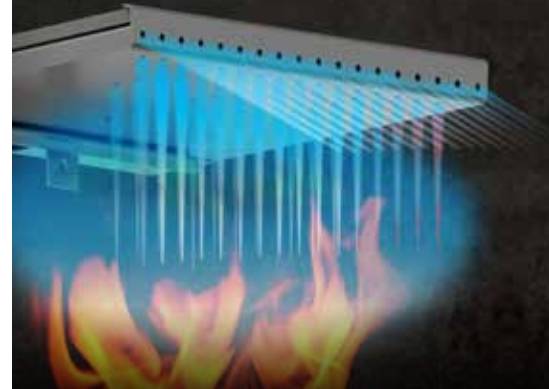
Vista Classic is available in eight porcelain enamel colours.



* Premium Colours

PACIFIC ENERGY

FEATURED TECHNOLOGIES



BAFFLE SYSTEM

Pacific Energy is a recognized industry leader in “clean burn” technology, as exemplified in our unique high capacity baffle system for preheating secondary combustion air for re-burning. By burning the combustible elements in the air, we improve our stoves’ environmental performance while significantly reducing the amount of wood that is consumed.

FLOATING FIREBOX

Our floating firebox system is legendary in the industry. Solidly designed with steel brick-support rails, it allows key parts to freely expand and contract, which reduces metal fatigue and adds years of life to the entire fireplace. The steel baffle (part of the clean-burning secondary combustion system) and the flame shield (which protects the stove top from intense heat) are all part of the floating firebox system.

KNIFE EDGE DOOR

A formed and welded knife edge opening creates a superior air tight seal to the door gasket while strengthening the stove face. This is a more labor intensive design but our experience has proven this is the best way to manufacture a fireplace.

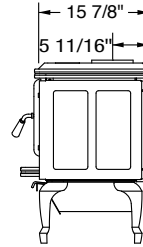
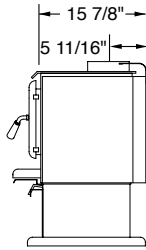
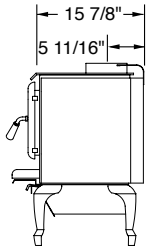
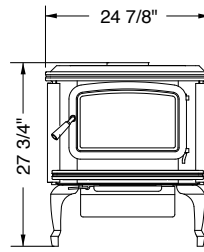
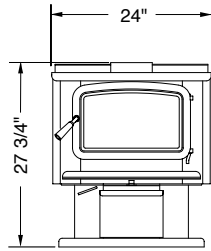
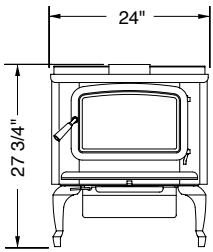
SINGLE LEVER AIR CONTROL

It’s never been simpler to achieve a clean, efficient flame. With Pacific Energy systems, a single, easy-to-operate air control lever can regulate the entire burn.



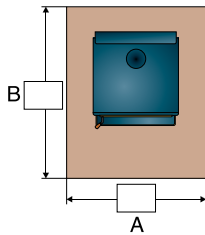
FOR MORE INFORMATION VISIT
www.pacificenergy.net

VISTA LEG MODEL VISTA PEDESTAL MODEL VISTA CLASSIC TECHNOLOGIES

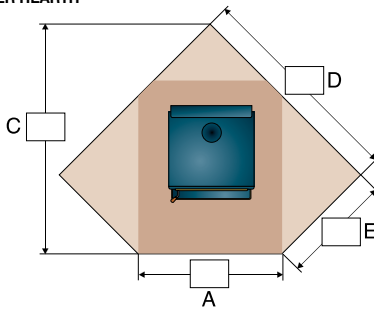


FLOOR PROTECTOR DIMENSIONS

STRAIGHT HEARTH



CORNER HEARTH



CANADA

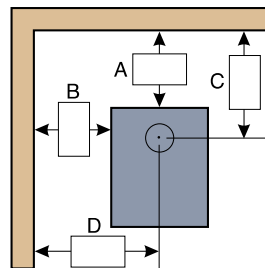
	A	B	C	D	E
Minimum (Not extended)	40"	43 1/4"	63 5/8"	59 1/8"	30 7/8"
Residential, single wall, vertical connector	40"	50 1/4"	67 7/8"	62 1/8"	33 7/8"
Residential, single wall, horizontal connector	40"	48 1/4"	67 7/8"	62 1/8"	33 7/8"
Residential, double wall, vertical connector	40"	42 1/4"	58"	55 1/8"	26 7/8"
Residential, double wall, horizontal connector	40"	42 1/4"	58"	55 1/8"	26 7/8"
Alcove, double wall, connector	40"	46 1/4"	-	-	-
Mobile home	40"	47 1/4"	63 5/8"	59 1/8"	30 7/8"

USA

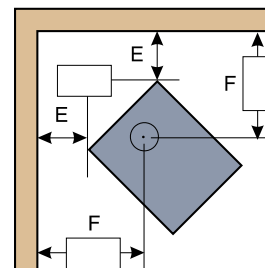
	A	B	C	D	E
Minimum (Not extended)	32"	33 1/4"	53 1/4"	50 3/8"	25"
Residential, single wall, vertical connector	32"	48 1/4"	58 7/8"	53"	30 3/8"
Residential, single wall, horizontal connector	32"	46 1/4"	58 7/8"	53"	30 3/8"
Residential, double wall, vertical connector	32"	40 1/4"	49"	46"	23 3/8"
Residential, double wall, horizontal connector	32"	40 1/4"	49"	46"	23 3/8"
Alcove, double wall, connector	32"	44 1/4"	-	-	-
Mobile home	32"	45 1/4"	56 1/8"	51"	28 3/8"

CLEARANCES TO COMBUSTIBLES

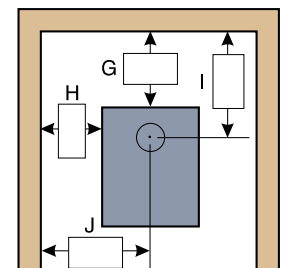
	From top of stove to ceiling	STRAIGHT (VERTICAL CONNECTOR)				STRAIGHT (HORIZONTAL CONNECTOR)				CORNER		ALCOVE			
		A	B	C	D	A	B	C	D	E	F	G	H	I	J
RESIDENTIAL SINGLE WALL CONNECTOR	58"	15"	14"	20 3/4"	26"	13"	14"	18 3/4"	26"	10"	22 5/8"	N/A	N/A	N/A	N/A
RESIDENTIAL DOUBLE WALL CONNECTOR	58"	7"	12"	12 3/4"	24"	7"	12"	12 3/4"	24"	3"	15 5/8"	11"	12"	16 3/4"	24"
MOBILE HOME DOUBLE WALL CONNECTOR	58"	12"	12"	17 3/4"	24"	N/A	N/A	N/A	N/A	8"	20 5/8"	N/A	N/A	N/A	N/A



STRAIGHT



CORNER



ALCOVE



pacificenergy.net

For reference only. Installations should be based on manuals and rating labels.